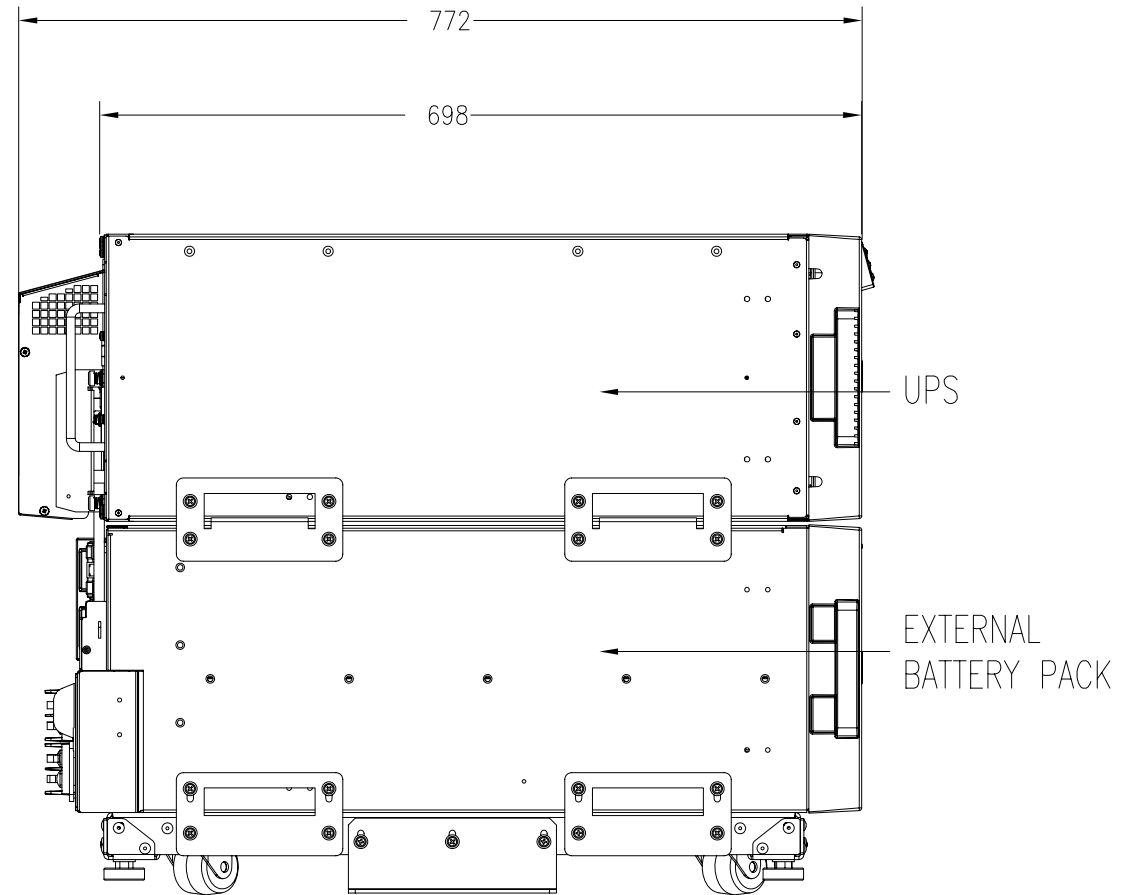
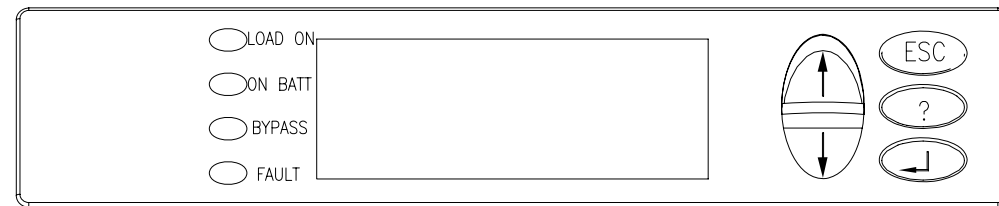


FRONT VIEW



SIDE VIEW



CONTROL PANEL  
(ENLARGED VIEW)

NOTES:

1. INSTALLATION SHALL COMPLY WITH ALL APPLICABLE LOCAL AND NATIONAL CODES.
2. PLEASE REFER TO PRODUCT MANUALS FOR ADDITIONAL DETAILS.
3. ALL DIMENSIONS ARE IN MILLIMETERS.
4. UPS WEIGHT 66kg.  
BATTERY PACK WEIGHT WITH 8 BATTERY MODULES 181kg.  
BATTERY PACK WEIGHT WITHOUT BATTERY MODULES 44kg.  
EACH BATTERY MODULE WEIGHT 17kg.  
TOTAL WEIGHT OF THE UNIT 247kg  
OPTIONAL UTILITY CART SURT013 ADDS A FURTHER 15KG TO THE TOTAL WEIGHT WHEN USED.
5. CABLE ENTRY IS FROM REAR SIDE OF THE UNIT.
6. UTILITY CART CAN BE ORDERED SEPARATELY AS SURT013 SKU NUMBER
7. THIS DRAWING PROVIDES INFORMATION FOR 15kVA AND 20kVA SURT PRODUCT
8. THE MAXIMUM SINGLE STACKABLE CONFIGURATION IS AN ADDITIONAL XLBP BATTERY PACK PLUS THE UPS AND ITS ASSOCIATED BATTERY PACK.

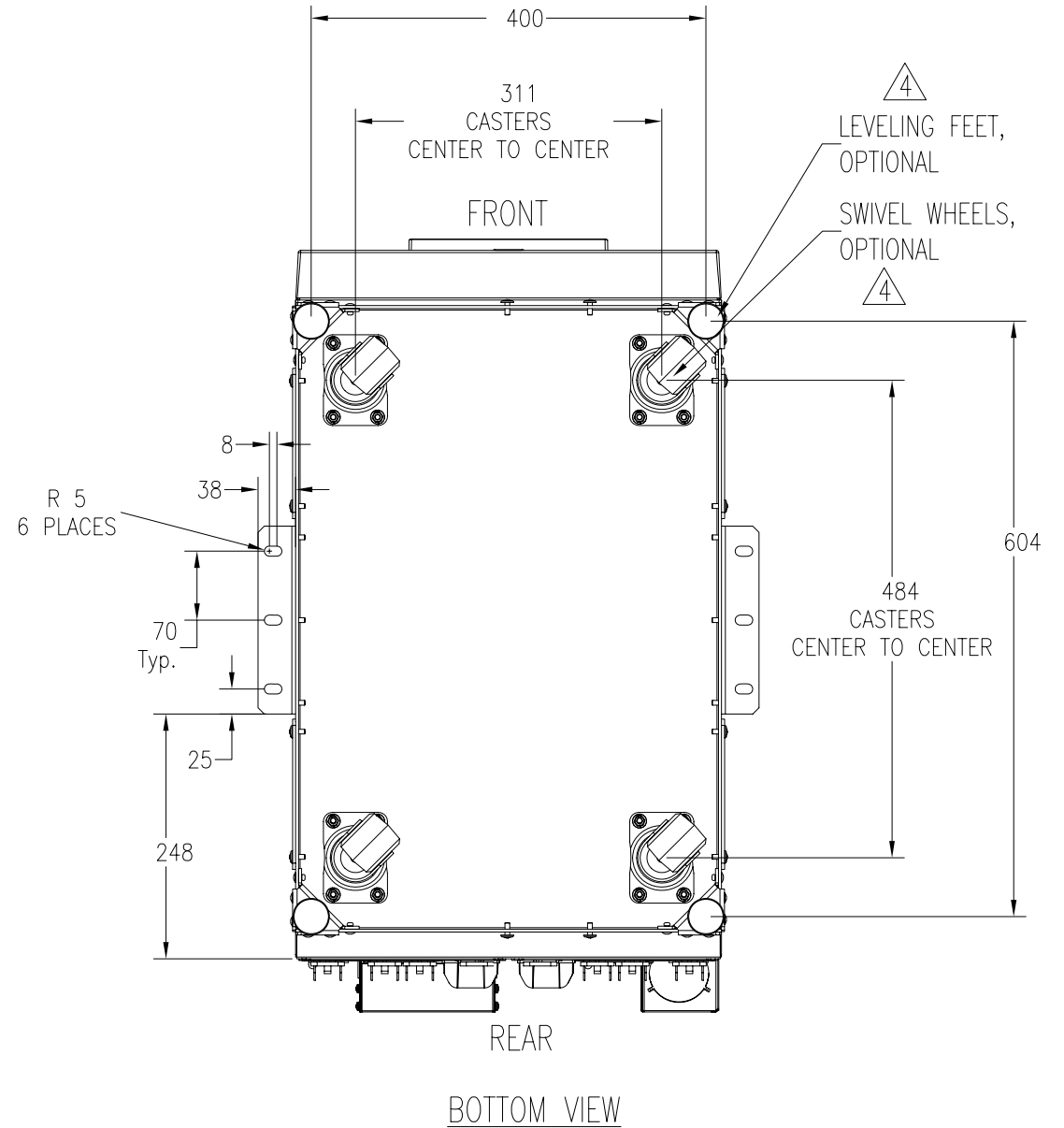
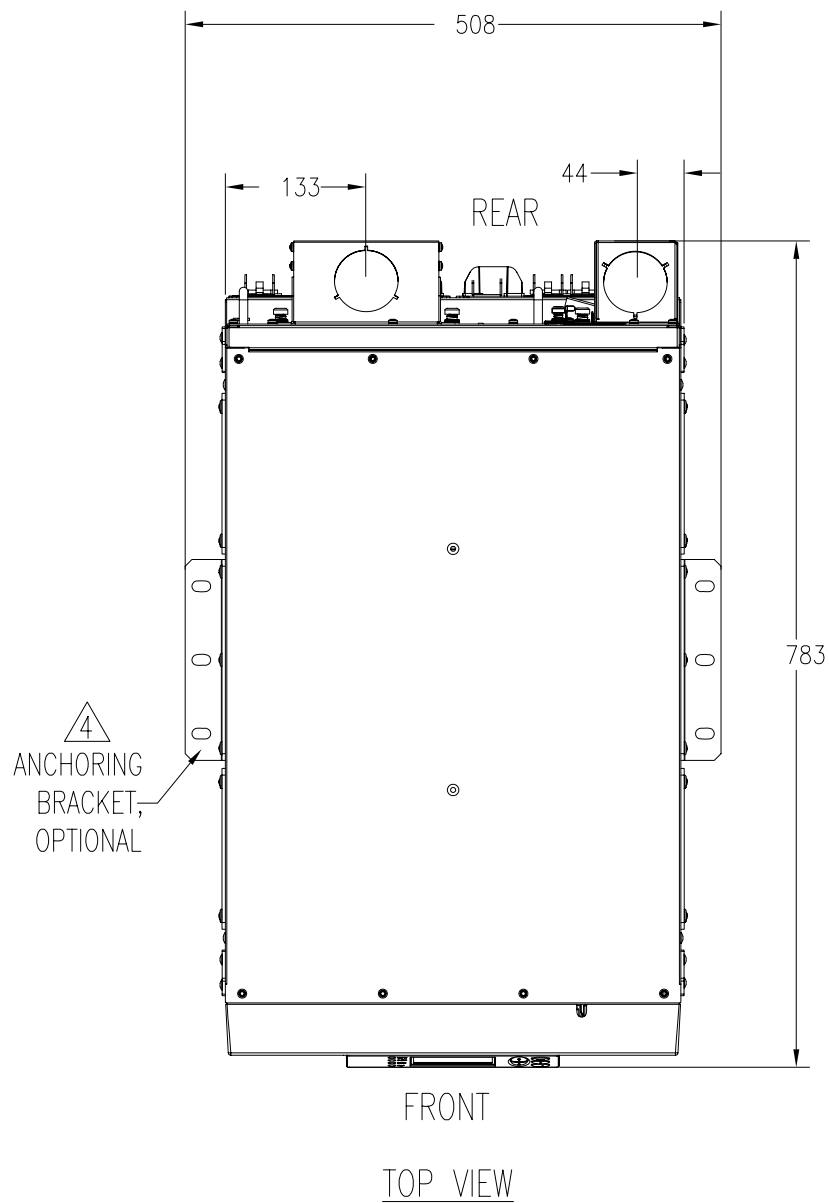
THIS DRAWING AND SPECIFICATIONS HEREIN ARE THE PROPERTY OF AMERICAN POWER CONVERSION AND SHALL NOT BE COPIED, REPRODUCED OR USED IN WHOLE OR IN PART, AS THE BASIS FOR THE MANUFACTURE OR SALE OF ITEMS WITHOUT WRITTEN PERMISSION FROM APC. THIS DRAWING IS BASED UPON LATEST AVAILABLE INFORMATION AND IS SUBJECT TO CHANGE WITHOUT NOTICE.



TITLE: Smart-UPS On-Line  
INPUT: 220/230/240VAC (1PH+N+G), 50/60Hz 1PH  
or 380/400/415VAC (3PH+N+G), 50/60Hz 3PH  
OUTPUT: 220/230/240VAC (1PH+N+G), 50/60Hz 1PH  
or 380/400/415VAC (3PH+N+G), 50/60Hz 3PH  
MAIN MECHANICAL

PROJECT: SUBMITTAL DRAWINGS SHEET 1 OF 6

DWG NO:	SURT15-20KRMXLI		REV:	0
DRAWN:	C. KRISHNA	20-OCT-09	FIRST ANGLE PROJECTION	
ENGINEER:	E. KOTLYAR	20-OCT-09		
APPROVED:	N. WHITING/J. PRECOPIO	20-OCT-09		



#### NOTES:

1. INSTALLATION SHALL COMPLY WITH ALL APPLICABLE LOCAL AND NATIONAL CODES.
2. PLEASE REFER TO PRODUCT MANUALS FOR ADDITIONAL DETAILS.
3. ALL DIMENSIONS ARE IN MILLIMETERS.
4. ANCHORING BRACKET, SWIVEL WHEELS AND LEVELING FEET CAN BE ORDERED SEPARATELY AS PART OF SURT013 UTILITY CART

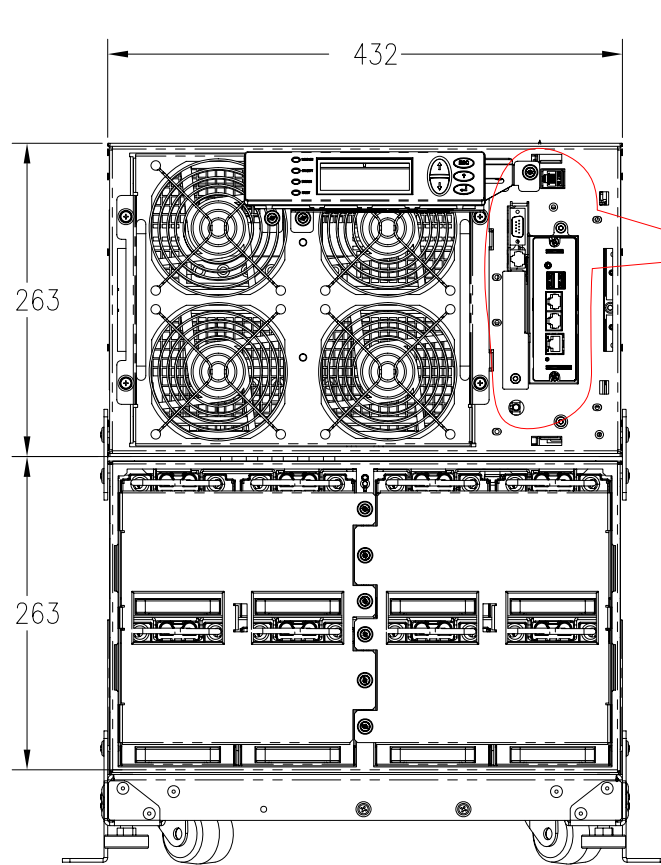
THIS DRAWING AND SPECIFICATIONS HEREIN ARE THE PROPERTY OF AMERICAN POWER CONVERSION AND SHALL NOT BE COPIED, REPRODUCED OR USED IN WHOLE OR IN PART, AS THE BASIS FOR THE MANUFACTURE OR SALE OF ITEMS WITHOUT WRITTEN PERMISSION FROM APC. THIS DRAWING IS BASED UPON LATEST AVAILABLE INFORMATION AND IS SUBJECT TO CHANGE WITHOUT NOTICE.



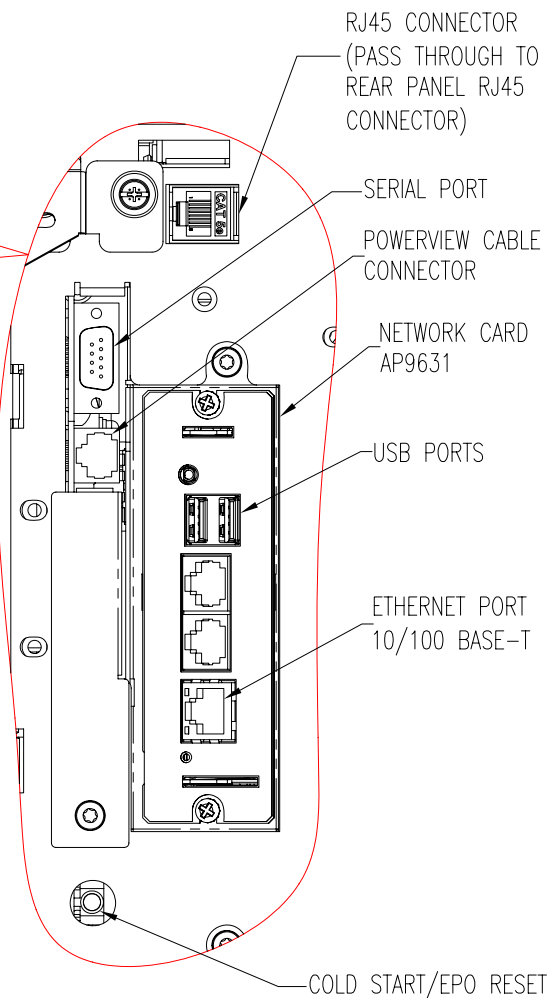
TITLE: Smart-UPS On-Line  
INPUT: 220/230/240VAC (1PH+N+G), 50/60Hz 1PH  
or 380/400/415VAC (3PH+N+G), 50/60Hz 3PH  
OUTPUT: 220/230/240VAC (1PH+N+G), 50/60Hz 1PH  
or 380/400/415VAC (3PH+N+G), 50/60Hz 3PH  
TOP AND BOTTOM VIEWS

DWG NO:	SURT15-20KRMXLI		REV:	0
DRAWN:	C. KRISHNA	20-OCT-09	ENGINEER:	E. KOTLYAR
APPROVED:	N. WHITING/J. PRECOPIO	20-OCT-09	PROJECT:	SUBMITTAL DRAWINGS

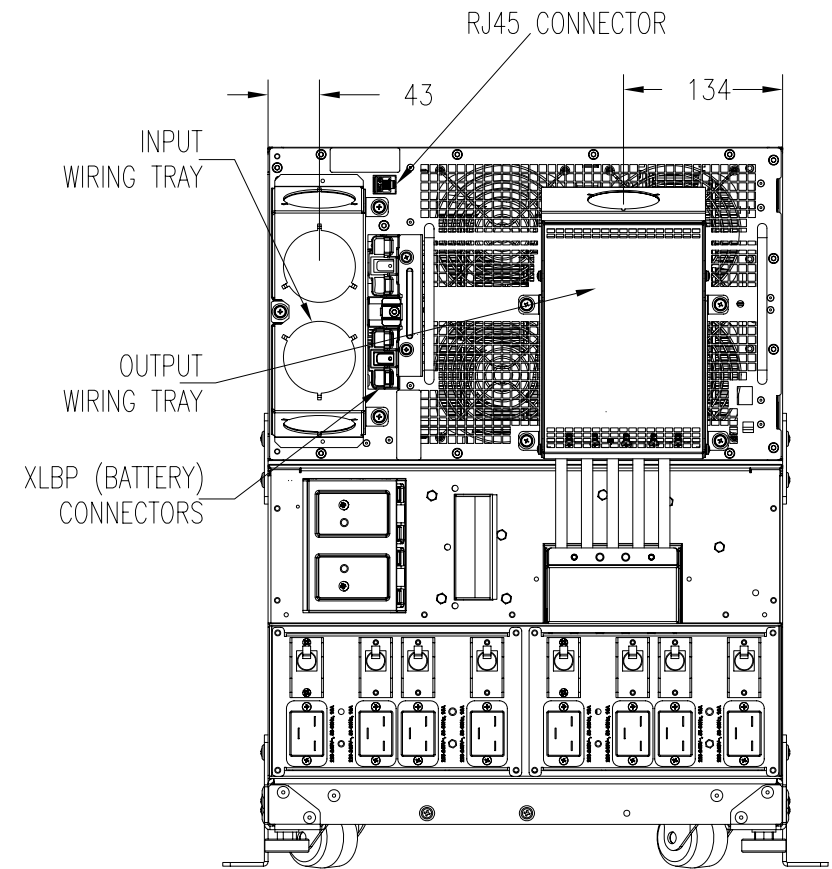
FIRST ANGLE PROJECTION



FRONT VIEW  
(BEZELS REMOVED)



INTERFACE  
ENLARGED VIEW



REAR VIEW

#### NOTES:

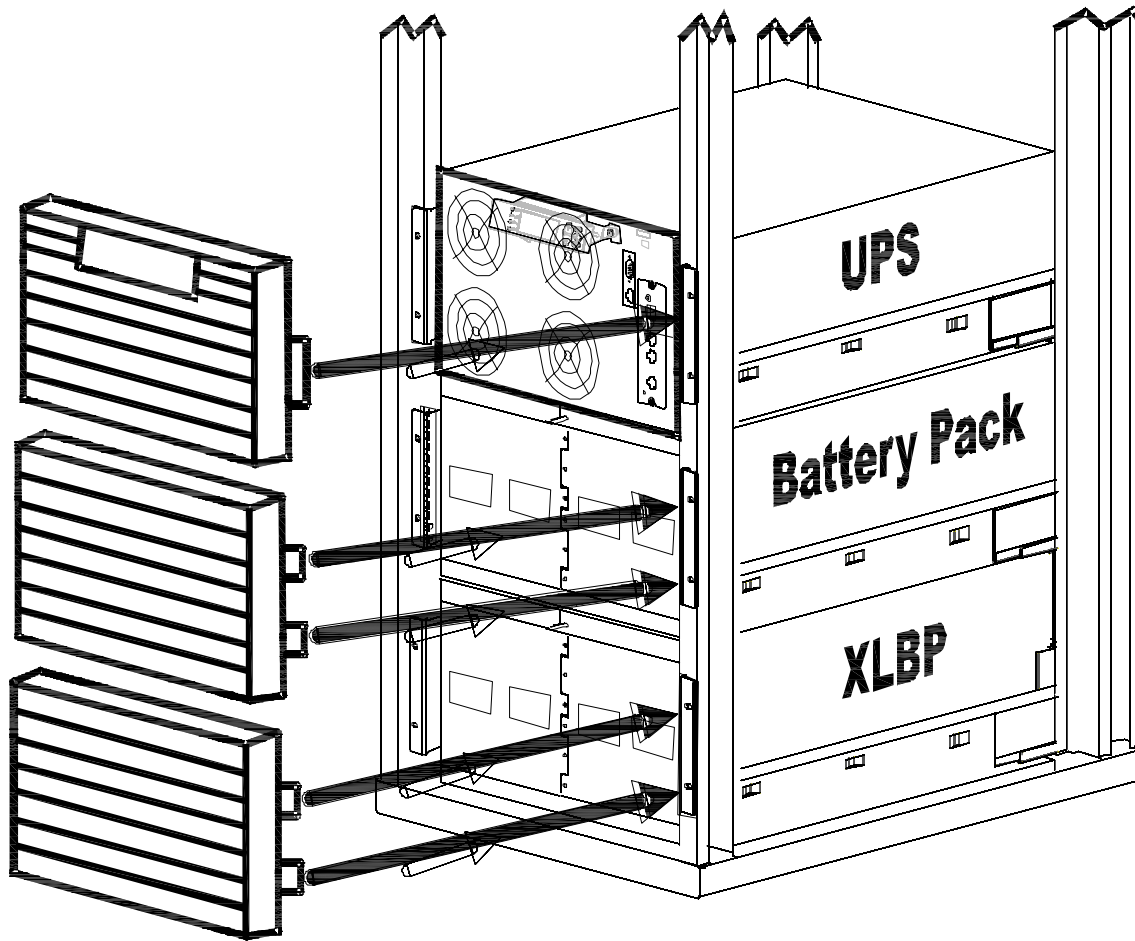
1. INSTALLATION SHALL COMPLY WITH ALL APPLICABLE LOCAL AND NATIONAL CODES.
2. PLEASE REFER TO PRODUCT MANUALS FOR ADDITIONAL DETAILS.
3. ALL DIMENSIONS ARE IN MILLIMETERS.
4. ANCHORING BRACKET, SWIVEL WHEELS AND LEVELING FEET CAN BE ORDERED SEPARATELY AS PART OF SURTO13 UTILITY CART

THIS DRAWING AND SPECIFICATIONS HEREIN ARE THE PROPERTY OF AMERICAN POWER CONVERSION AND SHALL NOT BE COPIED, REPRODUCED OR USED IN WHOLE OR IN PART, AS THE BASIS FOR THE MANUFACTURE OR SALE OF ITEMS WITHOUT WRITTEN PERMISSION FROM APC. THIS DRAWING IS BASED UPON LATEST AVAILABLE INFORMATION AND IS SUBJECT TO CHANGE WITHOUT NOTICE.



TITLE: Smart-UPS On-Line  
INPUT: 220/230/240VAC (1PH+N+G), 50/60Hz 1PH  
or 380/400/415VAC (3PH+N+G), 50/60Hz 3PH  
OUTPUT: 220/230/240VAC (1PH+N+G), 50/60Hz 1PH  
or 380/400/415VAC (3PH+N+G), 50/60Hz 3PH  
INTERNAL VIEWS  
PROJECT: SUBMITTAL DRAWINGS SHEET 3 OF 6

DWG NO:	SURT15-20KRMxLI		REV:	0
DRAWN:	C. KRISHNA	20-OCT-09	FIRST ANGLE PROJECTION	
ENGINEER:	E. KOTLYAR	20-OCT-09		
APPROVED:	N. WHITING/J. PRECOPIO	20-OCT-09		



ISOMETRIC VIEW

#### NOTES:

1. INSTALLATION SHALL COMPLY WITH ALL APPLICABLE LOCAL AND NATIONAL CODES.
2. PLEASE REFER TO PRODUCT MANUALS FOR ADDITIONAL DETAILS.
3. ALL DIMENSIONS ARE IN MILLIMETERS.
4. MAXIMUM NUMBER OF EXTERNAL BATTERY PACKS MUST NOT EXCEED 10.

THIS DRAWING AND SPECIFICATIONS HEREIN ARE THE PROPERTY OF AMERICAN POWER CONVERSION AND SHALL NOT BE COPIED, REPRODUCED OR USED IN WHOLE OR IN PART, AS THE BASIS FOR THE MANUFACTURE OR SALE OF ITEMS WITHOUT WRITTEN PERMISSION FROM APC. THIS DRAWING IS BASED UPON LATEST AVAILABLE INFORMATION AND IS SUBJECT TO CHANGE WITHOUT NOTICE.



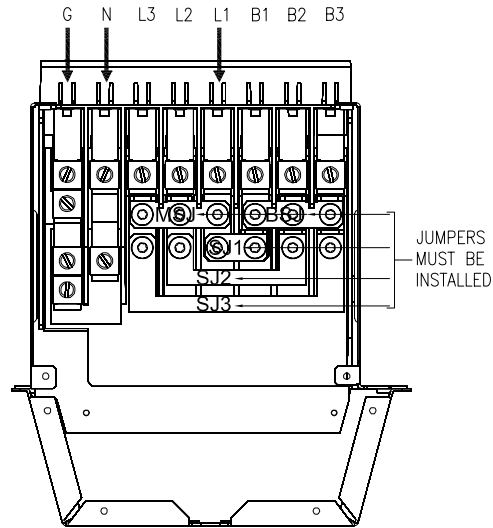
TITLE: Smart-UPS On-Line  
INPUT: 220/230/240VAC (1PH+N+G), 50/60Hz 1PH  
or 380/400/415VAC (3PH+N+G), 50/60Hz 3PH  
OUTPUT: 220/230/240VAC (1PH+N+G), 50/60Hz 1PH  
or 380/400/415VAC (3PH+N+G), 50/60Hz 3PH  
ISOMETRIC VIEW

PROJECT: SUBMITTAL DRAWINGS SHEET 4 OF 6

DWG NO:	SURT15-20KRMXLI		REV.	0
DRAWN:	C. KRISHNA	20-OCT-09	FIRST ANGLE PROJECTION	
ENGINEER:	E. KOTLYAR	20-OCT-09		
APPROVED:	N. WHITING/J. PRECOPIO	20-OCT-09		

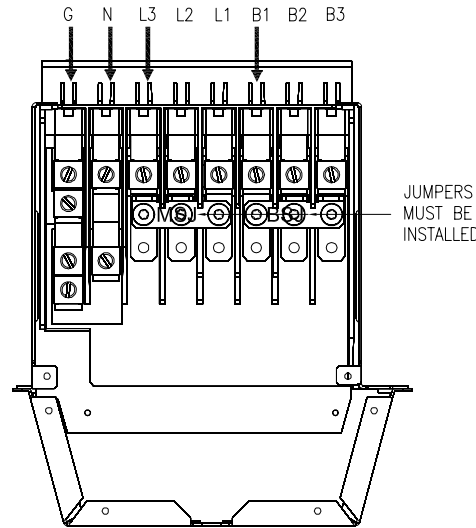
#### INPUT WIRING OPTION-1

SINGLE PHASE INPUT  
SINGLE PHASE OUTPUT  
SINGLE FEED



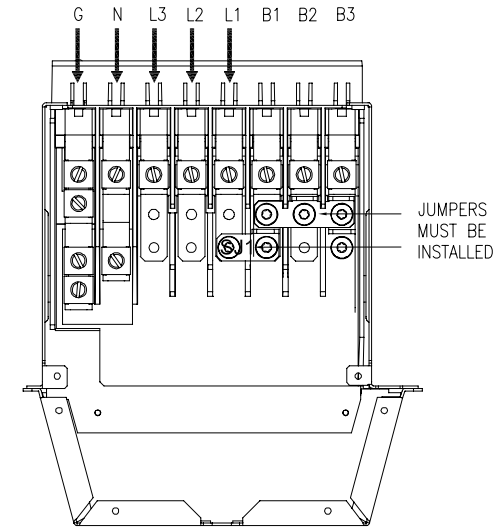
#### INPUT WIRING OPTION-2

SINGLE PHASE INPUT  
SINGLE PHASE OUTPUT  
DUAL FEED



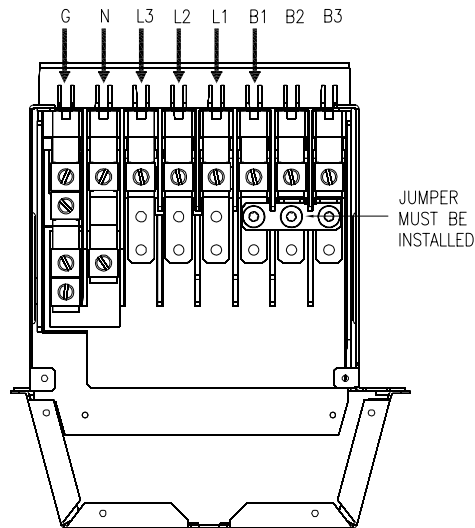
#### INPUT WIRING OPTION-3

THREE PHASE INPUT  
SINGLE PHASE OUTPUT  
SINGLE FEED



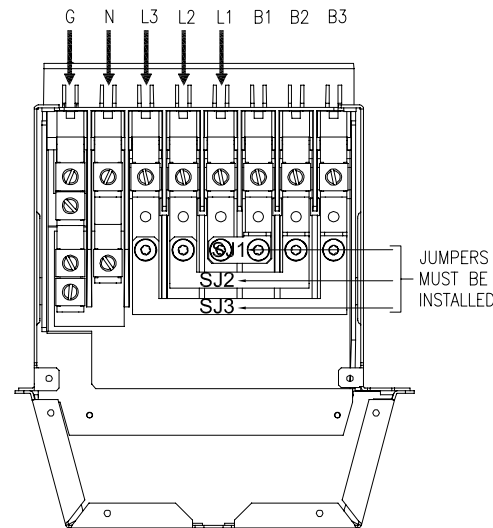
#### INPUT WIRING OPTION-4

THREE PHASE INPUT  
SINGLE PHASE OUTPUT  
DUAL FEED



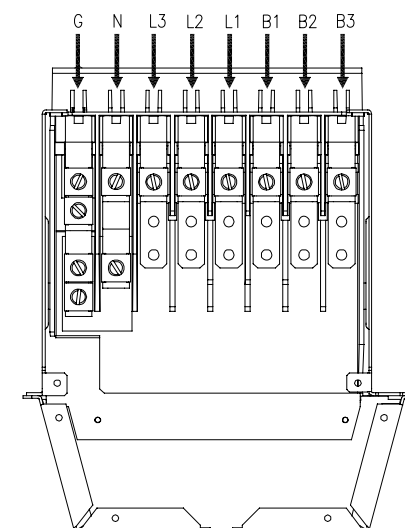
#### INPUT WIRING OPTION-5

THREE PHASE INPUT  
THREE PHASE OUTPUT  
SINGLE FEED



#### INPUT WIRING OPTION-6

THREE PHASE INPUT  
THREE PHASE OUTPUT  
DUAL FEED



#### NOTES:

1. INSTALLATION SHALL COMPLY WITH ALL APPLICABLE LOCAL AND NATIONAL CODES.
2. PLEASE REFER TO PRODUCT MANUALS FOR ADDITIONAL DETAILS.
3. ALL DIMENSIONS ARE IN MILLIMETERS.

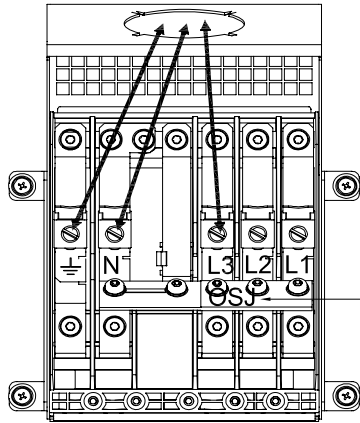
THIS DRAWING AND SPECIFICATIONS HEREIN ARE THE PROPERTY OF AMERICAN POWER CONVERSION AND SHALL NOT BE COPIED, REPRODUCED OR USED IN WHOLE OR IN PART, AS THE BASIS FOR THE MANUFACTURE OR SALE OF ITEMS WITHOUT WRITTEN PERMISSION FROM APC. THIS DRAWING IS BASED UPON LATEST AVAILABLE INFORMATION AND IS SUBJECT TO CHANGE WITHOUT NOTICE.



TITLE: Smart-UPS On-Line  
INPUT: 220/230/240VAC (1PH+N+G), 50/60Hz 1PH  
or 380/400/415VAC (3PH+N+G), 50/60Hz 3PH  
OUTPUT: 220/230/240VAC (1PH+N+G), 50/60Hz 1PH  
or 380/400/415VAC (3PH+N+G), 50/60Hz 3PH  
INPUT WIRING OPTIONS  
PROJECT: SUBMITTAL DRAWINGS SHEET 5 OF 6

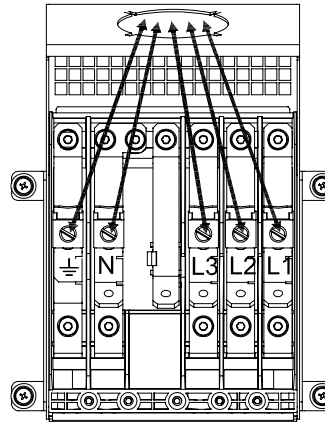
DWG NO:	SURT15-20KRMXLI		REV.	0
DRAWN:	C. KRISHNA	20-OCT-09	FIRST ANGLE PROJECTION	
ENGINEER:	E. KOTLYAR	20-OCT-09		
APPROVED:	N. WHITING/J. PRECOPIO	20-OCT-09		

OUTPUT HARDWIRE OPTION-1  
SINGLE PHASE HARDWIRE  
OUTPUT CONNECTION

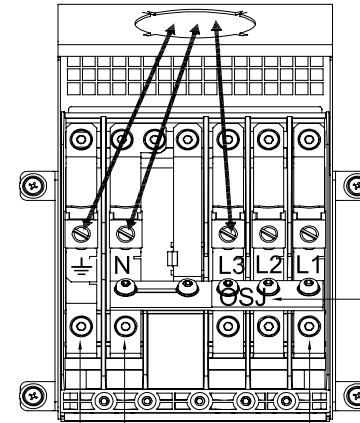


ENSURE THE (OSJ) IS  
SECURED TO THE OUTPUT  
WIRING TRAY USING THE  
FIVE SCREWS PROVIDED

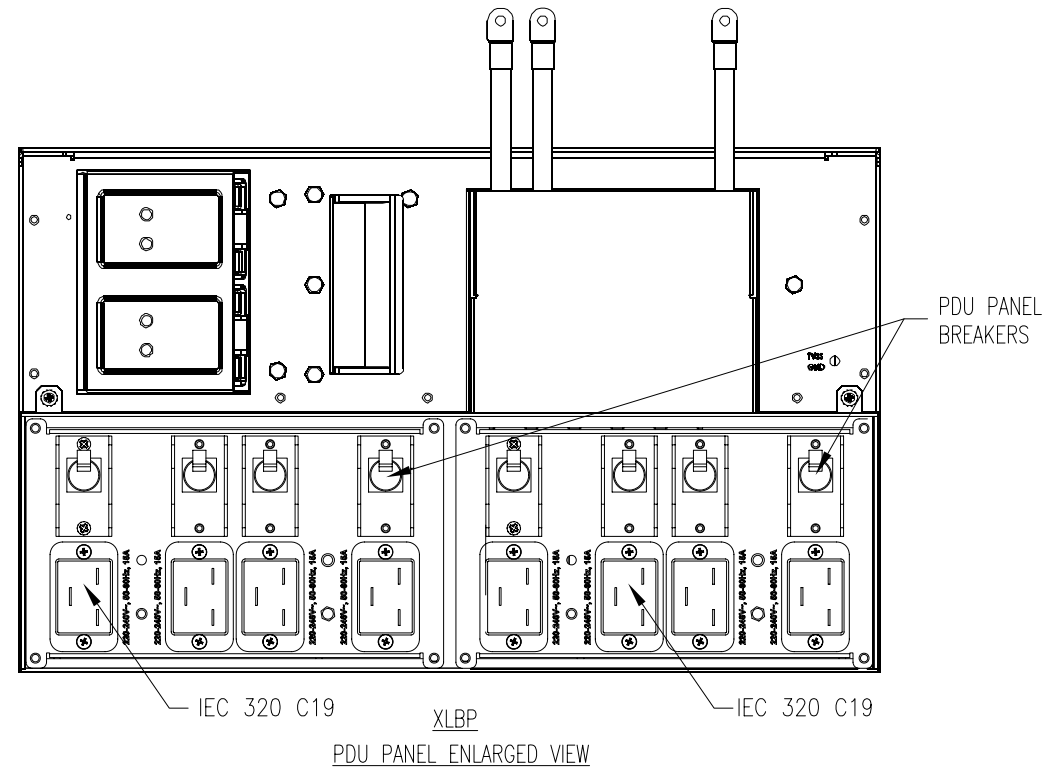
OUTPUT HARDWIRE OPTION-2  
THREE PHASE HARDWIRE  
OUTPUT CONNECTION XLBP PDU NOT CONNECTED  
OUTPUT SHORTING JUMPER (OSJ) REMOVED



OUTPUT PDU OPTION  
SINGLE PHASE OUTPUT  
CONNECTION TO BATTERY PACK PDU



ENSURE THE (OSJ) IS  
SECURED TO THE OUTPUT  
WIRING TRAY USING THE  
FIVE SCREWS PROVIDED



NOTES:

1. INSTALLATION SHALL COMPLY WITH ALL APPLICABLE LOCAL AND NATIONAL CODES.
2. PLEASE REFER TO PRODUCT MANUALS FOR ADDITIONAL DETAILS.
3. ALL DIMENSIONS ARE IN MILLIMETERS.

THIS DRAWING AND SPECIFICATIONS HEREIN ARE THE PROPERTY OF AMERICAN POWER CONVERSION AND SHALL NOT BE COPIED, REPRODUCED OR USED IN WHOLE OR IN PART, AS THE BASIS FOR THE MANUFACTURE OR SALE OF ITEMS WITHOUT WRITTEN PERMISSION FROM APC. THIS DRAWING IS BASED UPON LATEST AVAILABLE INFORMATION AND IS SUBJECT TO CHANGE WITHOUT NOTICE.



TITLE: Smart-UPS On-Line  
INPUT: 220/230/240VAC (1PH+N+G), 50/60Hz 1PH  
or 380/400/415VAC (3PH+N+G), 50/60Hz 3PH  
OUTPUT: 220/230/240VAC (1PH+N+G), 50/60Hz 1PH  
or 380/400/415VAC (3PH+N+G), 50/60Hz 3PH  
OUTPUT WIRING OPTIONS  
PROJECT: SUBMITTAL DRAWINGS SHEET 6 OF 6

DWG NO: SURT15-20KRMXLI  
DRAWN: C KRISHNA  
ENGINEER: E.KOTLYAR  
APPROVED: N.WHITING/J.PRECOPIO  
REV. 0  
20-OCT-09  
20-OCT-09  
20-OCT-09  
FIRST ANGLE PROJECTION